

Kadaltilla

Adelaide Park Lands Authority

2023–2028 Strategic Plan



Acknowledgement of Country

The Kadaltilla/Adelaide Park Lands Authority (Kadaltilla) acknowledges the Kurna people as the traditional owners of the Adelaide Plains and pays respect to Elders past and present. Kadaltilla recognises and respects the cultural heritage, beliefs and relationship which the Kurna people have with the land and acknowledges that they are of continuing importance to the Kurna people living today.

Kadaltilla extends that respect to other Aboriginal Language Groups and other First Nations.

Kadaltilla is the principal advisor to both the Council and the State Government on the protection, management, enhancement and promotion of the Adelaide Park Lands.

Kadaltilla is a traditional Kurna word meaning Green place/ Green lands/Parklands.



Contents

Acknowledgement of Country 2

Message from the Presiding Member..... 4

Message from the Deputy Presiding Member 5

The Role of Kadaltilla in the Governance of the Park Lands 6

Our Strategy 8

Our Strategic Pillars 9

Cultural Value 10

Environmental Performance 12

Management and Protection 14

Expert Advice 16

Governance Structure 18

Timelines 18



Message from the Presiding Member

The Kadaltilla Strategic Plan outlines a bold vision for making sure the Park Lands can live up to its promise as one of Australia's – if not the world's – most treasured urban areas.

The 760ha of natural area that surrounds the City of Adelaide has always served as a place of refuge and respite for our community.

While the Adelaide Park Lands has significant environmental importance as a home for native flora and fauna, their significance also extends to the positive effect on our residents' mental health and wellbeing.

The Park Lands offer a range of experiences, from walking trails through wooded areas, to native wetlands thriving with biodiversity and bird life, countless sporting pitches and many recreation spaces.

Our population is increasing, and private open space is diminishing through infill development, so our public open space is increasingly precious.

Over the next five years, we want to maintain their cultural value and improve their sustainability – all while taking on expert advice from peak organisations to help guide us along the way.

Culturally, securing World Heritage listing for the Adelaide Park Lands is a key objective in this Strategic Plan. The Park Lands sets us apart from other capital cities. We'll be working closely with the State Government to lodge a submission to ensure our city gets the international recognition it deserves.

Climate change is going to play a key role in shaping the future of our open space in years to come. As global warming ramps up, Adelaide is on track to become a 50-degree city with more frequent and intense hot weather patterns.

Increased tree cover, and other initiatives, don't just help cool the environment and reduce urban heat islands. They can reduce airborne particles and improve our resident's respiratory health.



As such, this Plan promises to regularly review tree canopy, biodiversity, and sustainability across our networks of parks to map changes and find home for improvement.

We are continuing to deliver key projects under the Adelaide Park Lands Management Strategy, including the Victoria Park/Pakapakanthi (Park 16) Master Plan. The Master Plan for this 72ha parcel includes increasing tree canopy, improved facilities, and better access for pedestrians and cyclists.

Above all, this Strategic Plan charts a shared vision to safeguard the future of Adelaide's Park Lands as an irreplaceable natural asset that not only connects us to nature but helps to connect us with each other.

Jane Lomax-Smith
Lord Mayor of Adelaide

Message from the Deputy Presiding Member

The Park Lands are vital to Adelaide and an enviable asset of our city. Our aim is to make sure everyone in South Australia can use and enjoy the Park Lands while enhancing their unique character and cultural heritage as our population grows. Rather than seeing the parks as a boundary to the city, we view them as an integral part of what makes Adelaide a great place to live.

Our strategy focuses on objectives, initiatives and measures of success to ensure this vision is both monitored and carried out effectively. We want all South Australians to continue to experience the beauty and the many environmental, health and economic benefits that come from the Park Lands and, as such, it is imperative that the Park Lands are well utilised and their integrity preserved for future generations.

Elinor Walker



The Role of Kadaltilla in the Governance of the Park Lands

The Kadaltilla/Adelaide Park Lands Authority (Kadaltilla) is the principal advisor to both the City of Adelaide and the State Government on the protection, management, enhancement, and promotion of the Adelaide Park Lands.

Kadaltilla is established pursuant to section 5 of the *Adelaide Park Lands Act 2005 (SA)* and operates as a subsidiary of the City of Adelaide, pursuant to section 42 of the *Local Government Act 1999 (SA)*. Kadaltilla acts in accordance with its Charter and as set out in the *Adelaide Park Lands Act 2005 (SA)*.

The inaugural meeting of the Authority was held on 7 February 2007 and its first full financial year of operation was 2007–2008. On 11 May 2023, the Minister approved a change to Kadaltilla's Charter so that it would be branded as the 'Kadaltilla/Adelaide Park Lands Authority' (Kadaltilla).

The City of Adelaide and the State Government of South Australia are committed to protecting and enhancing the Adelaide Park Lands for the benefit of all South Australians.

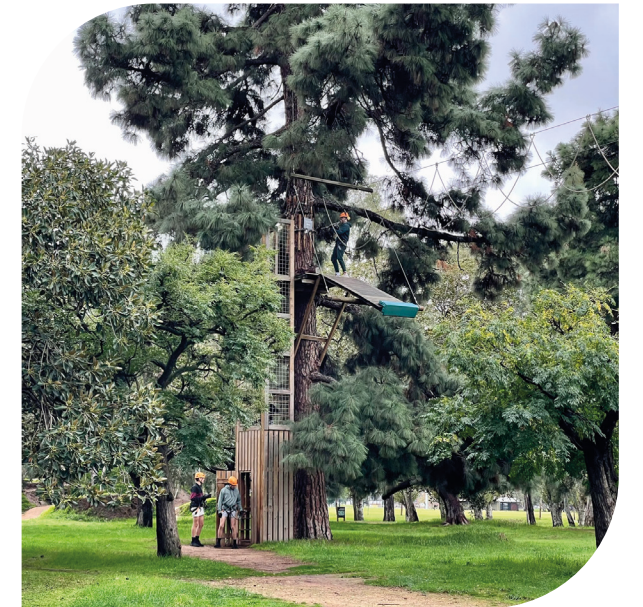
The City of Adelaide manages about 80% of the Adelaide Park Lands. The State Government manages the remaining 20% which is predominantly comprised of the educational, institutional and biomedical precinct along North Terrace, but also includes the Adelaide Botanic Gardens and Botanic Park/Tainmuntilla.

The City of Adelaide, on behalf of its communities of the City of Adelaide and the State, is committed to ensuring that Kadaltilla delivers maximum benefit for the future of Adelaide's Park Lands as the City of Adelaide's defining feature.



Kadaltilla was established to undertake the following Functions, as set out in the *Adelaide Park Lands Act 2005 (SA)*:

1. To undertake a key policy role with respect to the management and protection of the Adelaide Park Lands
2. To prepare, and as appropriate, to revise the Adelaide Park Lands Management Strategy in accordance with the requirements of the *Adelaide Park Lands Act 2005 (SA)*
3. To provide comments and advice on any management plan prepared by the Adelaide City Council or a State Authority under the *Adelaide Park Lands Act 2005 (SA)* or the *Local Government Act 1999 (SA)* that relates to any part of the Adelaide Park Lands; and to monitor and, as appropriate, to provide comments, advice or reports in relation to the implementation or operation of any such plan
4. To provide comments or advice in relation to the operation of any lease, licence or other form of grant of occupation of land within the Adelaide Park Lands
5. On the basis of any request or on its own initiative, to provide advice to the Adelaide City Council or to the Minister on policy, development, heritage or management issues affecting the Adelaide Park Lands
6. To promote public awareness of the importance of the Adelaide Park Lands and the need to ensure that they are managed and used responsibly
7. To ensure that the interests of South Australians are taken into account, and that community consultation processes are established, in relation to the strategic management of the Adelaide Park Lands
8. To administer the Adelaide Park Lands Fund
9. To undertake or support other activities that will protect or enhance the Adelaide Park Lands, or in any other way promote or advance the objects of the *Adelaide Park Lands Act, 2005 (SA)*



Our Strategy

The Adelaide Park Lands are the largest inner urban park system in Australia. Nationally Heritage listed for their unique design – they are the city’s lungs, backyard, playground, meeting space and more. They are there for everyone to enjoy, enhancing physical and mental well-being, and they secure Adelaide’s place as one of the planet’s most liveable cities.

Purpose

To be the trusted voice on the Adelaide Park Lands which actively conserves, promotes, and enhances the environmental, economic, cultural, recreational, and social importance value of the Adelaide Park Lands

Guiding Principles

- Preserve and strengthen the integrity of the Adelaide Park Lands
- Promote the values of the Park Lands – as Adelaide’s defining feature, and an internationally unique asset
- Partner with Council and the State Government to advocate the benefits of the Adelaide Park Lands
- Advise Government at all levels on the management and usage of the Adelaide Park Lands for the benefit of all South Australian’s

Governance

- Maximise utilisation of skills, knowledge, and enthusiasm of the Board through effective meetings that foster dialogue and the development of shared thinking
- Hold strategic workshops on major initiatives in the Adelaide Park Lands
- Provide early input into issues relating to the Park Lands to ensure Kadaltilla’s advice is timely and relevant
- Monitor the implementation of major projects arising from the Adelaide Park Lands Management Strategy
- Engage with the State Government as their key advisory Board to the Park Lands
- Scrutinise functions of the Board to ensure alignment with the *Adelaide Park Lands Act 2005*
- Advocate for the value of Kadaltilla as a proactive, accountable, independent, skills-based board that advises on Park Lands management and protection



Our Strategic Pillars

CULTURAL VALUE

Promote the cultural values of the Park Lands including Kaurna culture, heritage and wellbeing

ENVIRONMENTAL PERFORMANCE

Maintain and improve climate resilience and the landscape values of the Park Lands

MANAGEMENT AND PROTECTION

Treat the Park Lands holistically with an adaptive future focused approach

EXPERT ADVICE

Function as the peak advisory body for policy, development, heritage, and management of the Park Lands based on sound data and evidence

Cultural Value

Promote the cultural values of the Park Lands including Kurna culture, heritage, and wellbeing

APLMS Signature Projects

- Cultural Mapping

Objectives

- 1.1 Seek Kurna cultural authority in everything we do
- 1.2 Assist with Kurna cultural mapping
- 1.3 Advocate for the featuring of the Adelaide Park Lands in relevant promotional campaigns
- 1.4 Champion the development of World Heritage listing nomination

Initiatives

- 1.1 Partner with Kurna culture authority
- 1.2 Support Kurna Cultural mapping progress
- 1.3 Develop specialist branding and promotion of Kadaltilla and the Park Lands
- 1.4 Regularly review World Heritage listing submission progress

Measures of Success

- 1.1 Each matter that comes before Kadaltilla considers Kurna culture
- 1.2 Kurna Cultural mapping completed and used to inform Kadaltilla considerations by 2024
- 1.3 Adelaide Park Lands featured in relevant promotional campaigns
- 1.4 State Government support for World Heritage listing submission by 2026



Environmental Performance

Maintain and improve climate resilience and the landscape values of the Park Lands

APLMS Signature Projects

- Karrawirra Pari Restoration
- Reimagined Rymill Park (Murlawirrapurka)
- Strategic Water Resources

Objectives

- 2.1 Define, protect, and enhance landscape values and design qualities
- 2.2 Promote ecologically sustainable initiatives and monitor tree canopy cover, biodiversity, and environmental sustainability and design quality
- 2.3 Consider climate resilience in everything we do
- 2.4 Research the impact of climate change on the Park Lands
- 2.5 Increase the accessibility of evidence-based information
- 2.6 Improved Irrigation and Water Management across the Park Lands

Initiatives

- 2.1 Establish performance principles for the Adelaide Park Lands
- 2.2 Regularly review tree canopy cover, biodiversity, and environmental sustainability in the Park Lands
- 2.3 Undertake a climate impact assessment of the Adelaide Park Lands
- 2.4 Develop a better understanding of environmental values and trends
- 2.5 Regular online Adelaide Park Lands updates (inclusive of events, trends, gardens and botanical features and items dealt with at Kadaltilla)
- 2.6 Investigate options for alternative recycled water sources to reduce reliance on bores

Measures of Success

- 2.1 Landscape values of the Adelaide Park Lands have been defined, protected and enhanced
- 2.2 Ecologically sustainable initiatives promoted, and tree canopy cover, biodiversity, and environmental sustainability and design quality have been regularly reviewed
- 2.3 Deliver a climate impact assessment of the Adelaide Park Lands
- 2.4 Environmental values and trends presented to Kadaltilla
- 2.5 Customers are well informed through regular online Adelaide Park Lands updates
- 2.6 Reduction in use of bore water and increase in use of recycled water



Management and Protection

Treat the Park Lands holistically with an adaptive future focused approach

APLMS Signature Projects

- Victoria Park Pakapakanthi Master Plan
- Whitmore Square Ipparrityi Master Plan
- Light Square Wauwi Master Plan
- Helen Mayo Park

Objectives

- 3.1 Monitor delivery of priority projects in the Adelaide Park Lands Management Strategy
- 3.2 Advocate for and establish Funding Mechanisms to support delivery of the Adelaide Park Lands Management Strategy
- 3.3 Review State Government Management Plans
- 3.4 Advocate for progression of State Heritage Listing by the State Government
- 3.5 Assess the landscape value of the Adelaide Park Lands including economic, environmental and cultural significance

Initiatives

- 3.1 Regular review of the progress of the Adelaide Park Lands Management Strategy priority projects
- 3.2 Identify funding opportunities for priority projects in the Adelaide Park Lands Management Strategy
- 3.3 Partner with the State Government to advise on management plans for areas of Adelaide Park Lands controlled by State Government
- 3.4 Continued support provided for the State Heritage listing
- 3.5 Undertake an assessment of economic, environmental and cultural significance of the Adelaide Park Lands

Measures of Success

- 3.1 Adelaide Park Lands Management Strategy priority projects implemented
- 3.2 Funding secured for priority projects in the Adelaide Park Lands Management Strategy
- 3.3 Advice provided to the State Government for the preparation of management plans for areas of Adelaide Park Lands controlled by State Government
- 3.4 State Heritage listing progressed by the State Government
- 3.5 Board Members are well informed through regular updates



Expert Advice

Function as the peak advisory body for policy, development, heritage, and management of the Park Lands based on sound data and evidence

APLMS Signature Projects

- APLMS Review and Update
- Park Lands Trail Improvement Plan
- National Heritage Management Plan

Objectives

- 4.1 Provide advice on plans, projects, and policies for the Adelaide Park Lands
- 4.2 Engage with City of Adelaide and State Government including input into State Government initiatives
- 4.3 Review leasing and licensing and event management policies together with other relevant Park Lands use policies
- 4.4 Strengthen Kadaltilla's engagement with City of Adelaide, State Government, and adjoining Councils
- 4.5 Increase the profile of the Kadaltilla Board

Initiatives

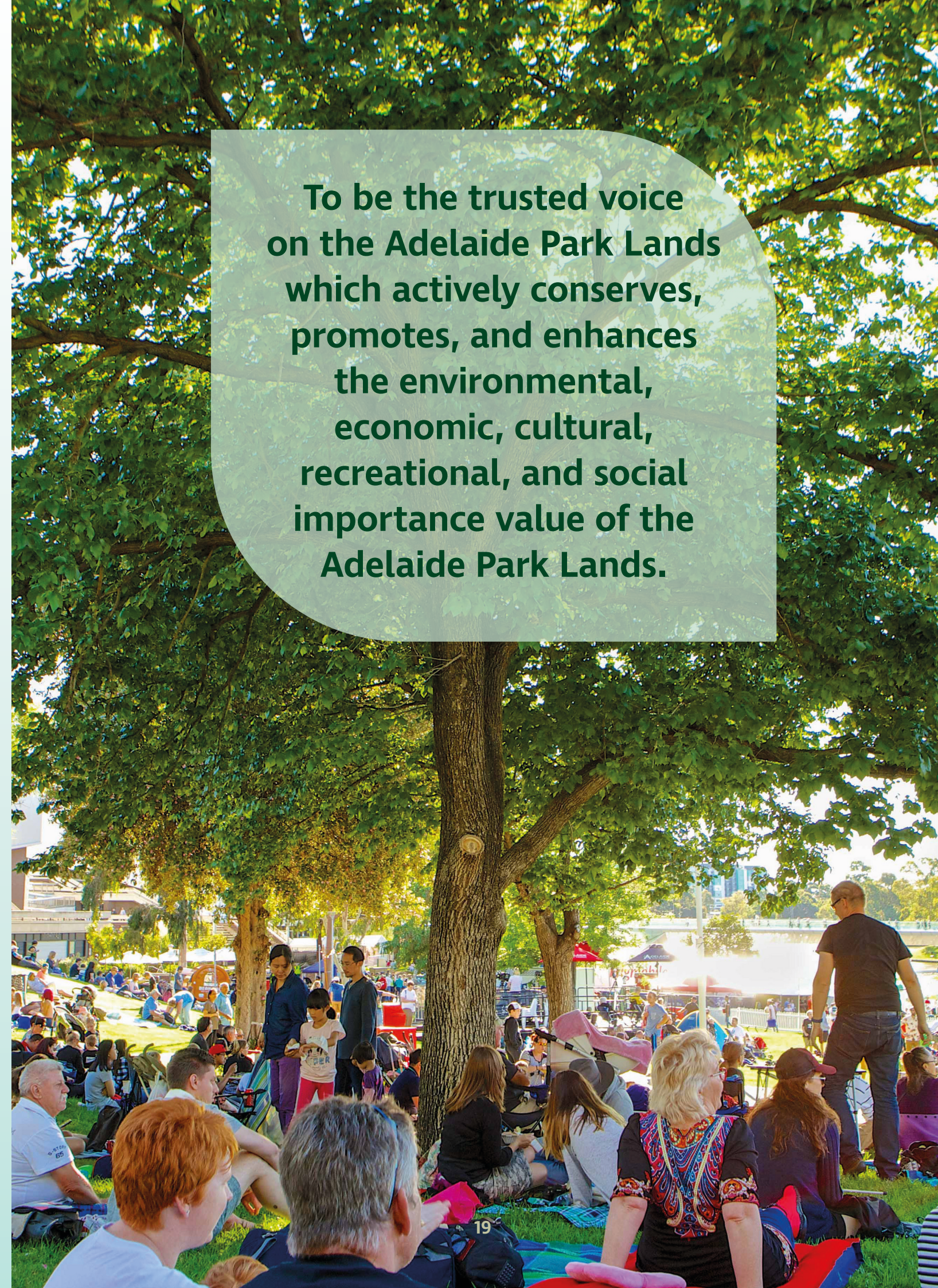
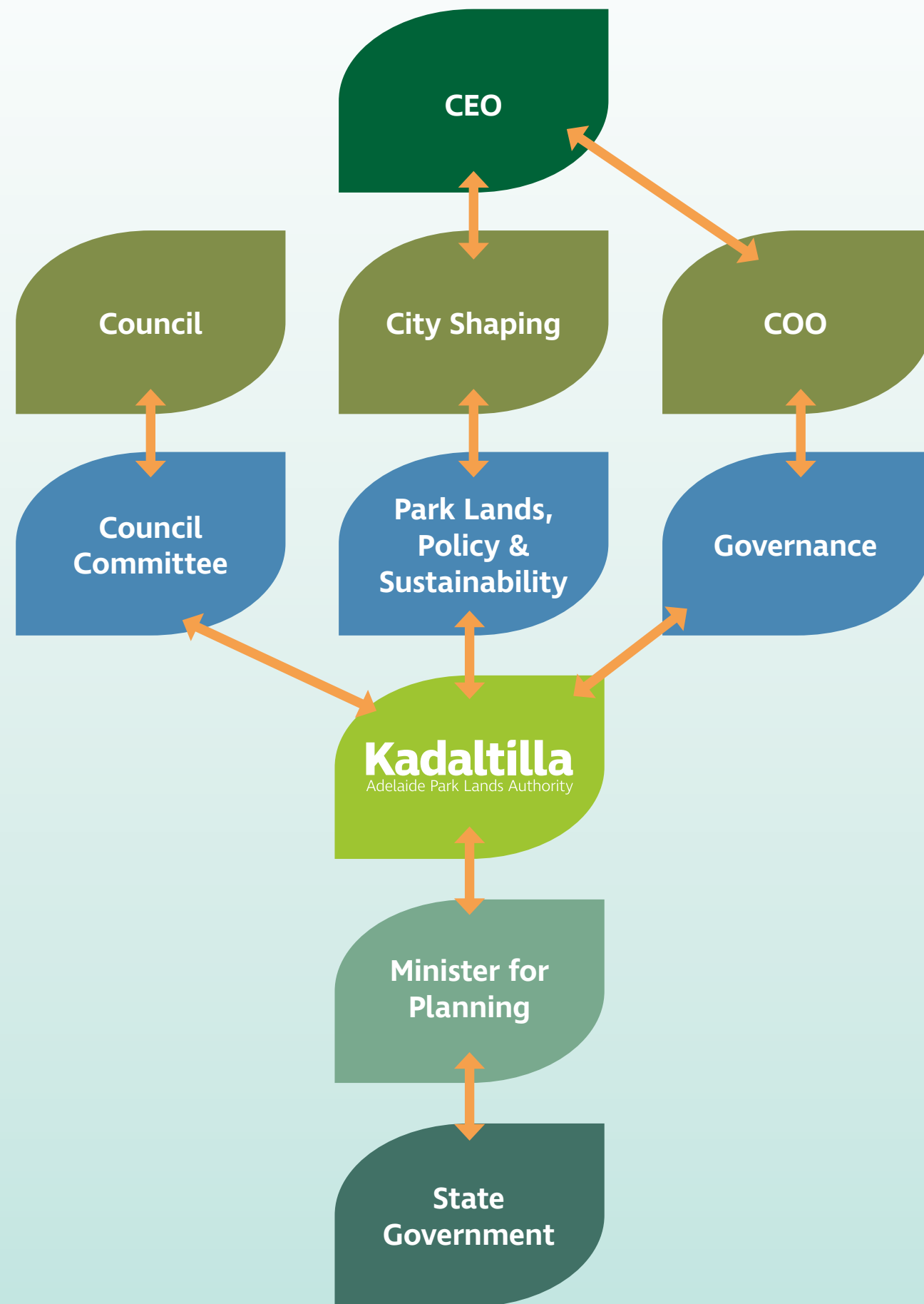
- 4.1 Regular review all plans, projects, and policies for the Adelaide Park Lands to ensure that have undergone review by Kadaltilla where appropriate
- 4.2 Partner with Council and the State Government to increase the accessibility of Kadaltilla
- 4.3 Create a Policies section on the Kadaltilla portal
- 4.4 Strategic stakeholder engagement on Adelaide Park Lands related matters
- 4.5 Create and maintain a social media profile detailing the business of Kadaltilla

Measures of Success

- 4.1 Advice of Kadaltilla is endorsed and adopted
- 4.2 State Government engages with Kadaltilla on State Government initiatives
- 4.3 Kadaltilla makes policy submissions on State and Local Government matters where deemed necessary
- 4.4 The City of Adelaide, State Government, and adjoining Councils actively engage with Kadaltilla
- 4.5 The public are aware of, and educated about, the business of Kadaltilla



Governance Structure



To be the trusted voice on the Adelaide Park Lands which actively conserves, promotes, and enhances the environmental, economic, cultural, recreational, and social importance value of the Adelaide Park Lands.

Timeframes

#	Measures of Success	Timeframe
1.1	Each matter that comes before Kadaltilla considers Kurna culture	November 2024 – Ongoing
1.2	Kurna Cultural mapping completed and used to inform Kadaltilla considerations by 2024	November 2024
1.3	Adelaide Park Lands featured in relevant promotional campaigns	March 2025
1.4	State Government support for World Heritage listing submission by 2026	December 2026
2.1	Landscape values of the Adelaide Park Lands have been defined, protected, and enhanced	July 2026 – Ongoing
2.2	Ecologically sustainable initiatives promoted, and tree canopy cover, biodiversity, and environmental sustainability and design quality have been regularly reviewed	December 2024 – Ongoing
2.3	Deliver a climate impact assessment of the Adelaide Park Lands	December 2027
2.4	Environmental values and trends presented to Kadaltilla	December 2026 – Ongoing
2.5	Customers are well informed through regular online Adelaide Park Lands updates	December 2024 – Ongoing
2.6	Reduction in use of bore water and increase in use of recycled water	December 2028
3.1	Adelaide Park Lands Management Strategy priority projects implemented	December 2028
3.2	Funding secured for priority projects in the Adelaide Park Lands Management Strategy	December 2028
3.3	Advice provided to the State Government for the preparation of management plans for areas of Adelaide Park Lands controlled by State Government	July 2024 – Ongoing
3.4	State Heritage listing progressed by the State Government	December 2028
3.5	Board Members are well informed through regular updates	November 2024 – Ongoing
4.1	Advice of Kadaltilla is endorsed and adopted	December 2024 – Ongoing
4.2	State Government engages with Kadaltilla on State Government initiatives	December 2028
4.3	Kadaltilla makes policy submissions on State and Local Government matters where deemed necessary	July 2027 – Ongoing
4.4	The City of Adelaide, State Government, and adjoining Councils actively engage with Kadaltilla	November 2026 – Ongoing
4.5	The public are aware of, and educated about, the business of Kadaltilla	December 2025





Kadaltilla

Adelaide Park Lands Authority

P (08) 8203 7203

E kadaltilla@cityofadelaide.com.au

W cityofadelaide.com.au/Kadaltilla